

LM

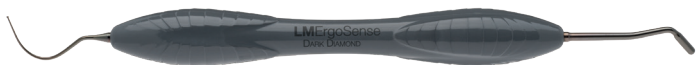
feel the
difference



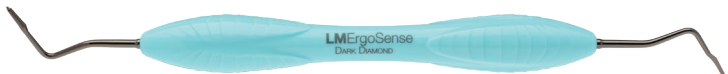
INSTRUMENTS FOR
INDIRECT ADHESIVE RESTORATIONS

NEW LM™ INSTRUMENT SELECTION for Indirect Adhesive Restoration procedures

NEW!



LM™ Build-up Base DD **LMErgoSense®** 485-707DDES



LM™ Build-up Shaper DD **LMErgoSense®** 352-353DDES



LM™ Build-up Trimmer **LMErgoSense®** 130-131ES

LMErgoMax™ 130-131XSI



Teflon Packer 1.2 mm **LMErgoSense®** 470-480ES

LMErgoMax™ 470-480XSI



Enamel Chisel **LMErgoSense®** 132-133ES

LMErgoMax™ 132-133XSI



Silicone Cutter **LMErgoSense®** 770-780ES
Non-medical device



Plugger 0.7-1.0 mm, cylindrical DD **LMErgoSense®** 335-340DDES



MAKE YOUR OWN WORKFLOW!

LM™ PREPARE AND BUILD-UP KIT

The kit includes LM™ Build-up
Base DD, LM™ Build-up
Shaper DD and LM™ Build-up
Trimmer instruments packed
in LM-Servo™ 5 cassette

6811ES



LM™ Prepare and Build-up kit is designed to optimize the workflow for indirect restorations, reducing clinical stress by improving predictability and durability of restorations. Unlike traditional tools aimed at direct restorations, the kit introduces three meticulously developed instruments: LM™ Build-up Base, LM™ Build-up Shaper, and LM™ Build-up Trimmer.

This innovative kit is developed in cooperation with dentist, researcher and international lecturer Dr. Rui Falacho. The kit aims to revolutionize indirect restorative procedures, making them more predictable and less stressful.



SCAN THE VIDEO QR

A workflow for indirect adhesive
restoration treatment in the posterior area
using the LM™ Prepare and Build-up kit

Prof. Dr. Rui Falacho
Department of Preventive and Restorative Sciences at
Penn Dental Medicine, University of Pennsylvania

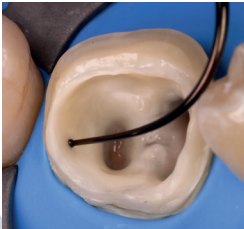


IMPROVED OUTCOMES

- Immediate Dentin Sealing (IDS) and resin coating
- Preservation of tooth structure
- Ideal preparation walls
- Minimizing over-preparation
- Accurate margins and finishing lines
- Improved adhesion and bonding
- Perfectly seated restorations
- Enhanced restoration longevity
- Better patient outcomes and experience
- Efficiency and less clinical stress

LM™ Prepare and Build-up

TREATMENT PROTOCOL



LM™ Build-up Base DD

A versatile instrument designed especially to enhance precision and control during the foundational steps of indirect restorative workflows. The LM™ Build-up Base DD is an essential instrument in the LM™ Prepare and Build-up kit.

The instrument with two different tip designs simplifies material application and cavity shaping, enabling predictable and high-quality outcomes. LM Dark Diamond™ coated tips allow precise and non-stick placement of the material.

0.5 mm spherical tip

- Precise and controlled material application
- Enables consistent 0.3-0.5 mm resin coating layer thickness for improved adhesive technique
- Helps to prevent the formation of air bubbles

Rounded modeling tip

- Cylindrical-shaped working end for packing and contouring composite
- Shaping of composite resins for smooth transitions and efficient resin condensation
- Creation of internal structures during the tooth build-up
- Supports occlusal build-up morphology

LM™ Build-up Shaper DD

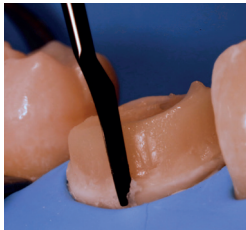
A groundbreaking instrument that revolutionizes the building-up process of indirect restorations by enabling precise, guided creation of preparation walls and finishing lines.

The innovative design allows shaping composite resin with minimal effort, ensuring accurate geometry, optimal angulation and preservation of tooth structure. LM Dark Diamond™ coated tips enhance precise and non-stick shaping of the material.



Preparation walls are shaped in a single guided movement removing excess resin and leaving perfectly angled, smooth surface. Finishing lines remain clear simplifying subsequent steps.

LM™ Build-up Shaper DD strongly reduces the need for post-restoration adjustments, streamlines workflows and enhances the clinical outcomes.



Tip design with angled wall feature

Guiding 3° wall design for optimal preparation geometry

Aids in achieving proper retention and stability of indirect restorations, even in adhesive workflows.

Unique guiding pin tip design

Allows for precise placement along the finishing line, maintaining an even thickness throughout

Enables meticulous following of the tooth contour while shaping a uniform, smooth finishing line

Reduces stress and time spent in using rotary instruments to expose and delineate finishing lines

LM™ Build-up Trimmer

A high-precision instrument designed to refine and finish preparation walls and margins with exceptional accuracy. Instrument is specifically engineered for indirect restorative workflows to achieve smooth, well-defined finishing lines and preparation geometry.

By offering exceptional control and cutting power, the LM™ Build-up Trimmer ensures optimal preparation refinement while preserving sound tooth structure.



Trimming and finishing tip

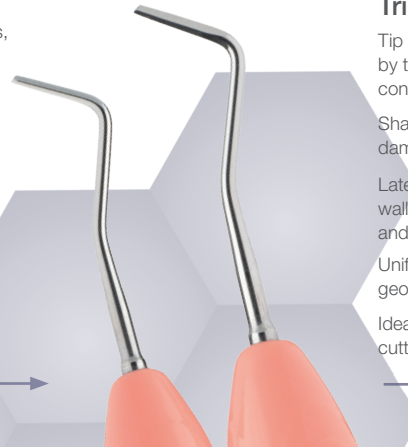
Tip aligns seamlessly with the finishing lines created by the LM™ Build-up Shaper DD for precise and controlled refinement

Sharp cutting edge removes excess resin without damaging surrounding enamel or dentin

Lateral edges optimized for trimming preparation walls allowing controlled removal of irregularities and undercuts

Uniform smoothing of walls ensures the preparation geometry is accurate and free of undercuts

Ideal for hard-to-reach areas ensuring consistent cutting results



Teflon Packer 1.2 mm

A specialized instrument designed to simplify the challenging task of inserting and manipulating Teflon tape or retraction cord during indirect restorative workflows.

The innovative design of the instrument combines an ergonomic handle for superior control with uniquely shaped and resized tip, ensuring precise placement and handling of Teflon.

The Teflon Packer's smooth surface tip design prevents sticking issues and enhances efficiency in sulcus retraction procedures.



Unique tip design

- Versatile use
- Provides optimal contact area with Teflon
- Enhances access and precision even in hard-to-reach areas

Enamel Chisel

A highly specialized instrument designed to precisely trim and refine enamel finishing lines, particularly in delicate areas such as the anterior region, but also applicable for posterior margins. The tool addresses the challenges of achieving smooth, well-defined margins without the risks associated with rotary instruments.

The Enamel Chisel is ideal for use in veneer cases where precise margins as thin as 0.1 mm to 0.6 mm are critical for the success of the restoration. The instrument simplifies the finishing process, requiring less manual dexterity while providing unparalleled precision and control.



Delicate refinement

- Accurate margin trimming for well-defined finishing lines without rotary instruments
- Precision without over-preparation
- Minimally invasive approach
- Versatile use across cases

Silicone Cutter

Non-medical device

An innovative instrument specifically designed to address the challenges of cutting and trimming silicone matrices and silicone impressions with precision, control, and safety.

The instrument introduces unparalleled versatility and efficiency to restorative workflows with its one tip shaped like a blade, and the other uniquely designed as a ring.

The Silicone Cutter ensures precise cuts, smooth finishes, and user safety, making it an essential tool for clinicians working with silicone in indirect restorative procedures.

Blade-shaped tip

Designed meticulously for controlled cuts without slipping or over-cutting
Offers support and tactile feedback
Minimizes risk of sharp edges, mistakes, and clinician injuries

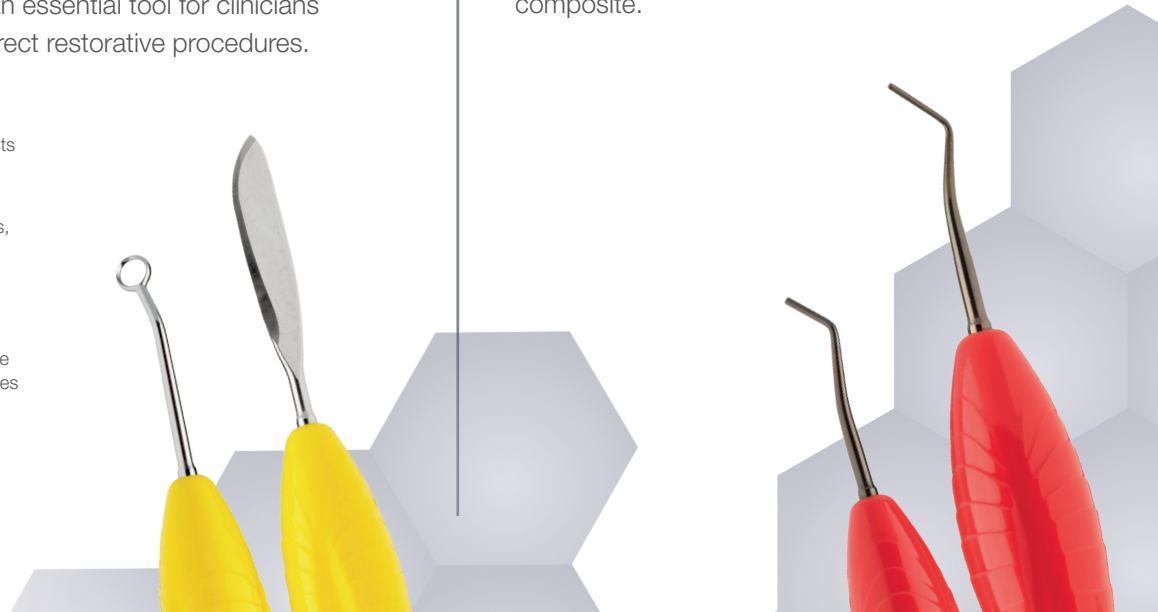
Ring-shaped tip

Refines impressions and creates escape grooves for 2-step impression techniques
Allows easy removal of material while maintaining control for smooth and accurate results
Enhances final impression accuracy

Plugger 0.7-1.0 mm, cylindrical DD

A plugger instrument with cylindrical-shaped working ends for packing and contouring restorative composites.

Precise 0.7 mm and 1.0 mm plugger ends are especially suitable for accessing hard-to-reach areas. LM Dark Diamond™ coated tips enhance precise and non-stick placement of the composite.



LM Dental™

 LM-Instruments Oy

Norrbyn rantatie 8 | FI-21600 Parainen | Finland

Tel. +358 2 4546 400

info@lm-dental.com | www.lm-dental.com

